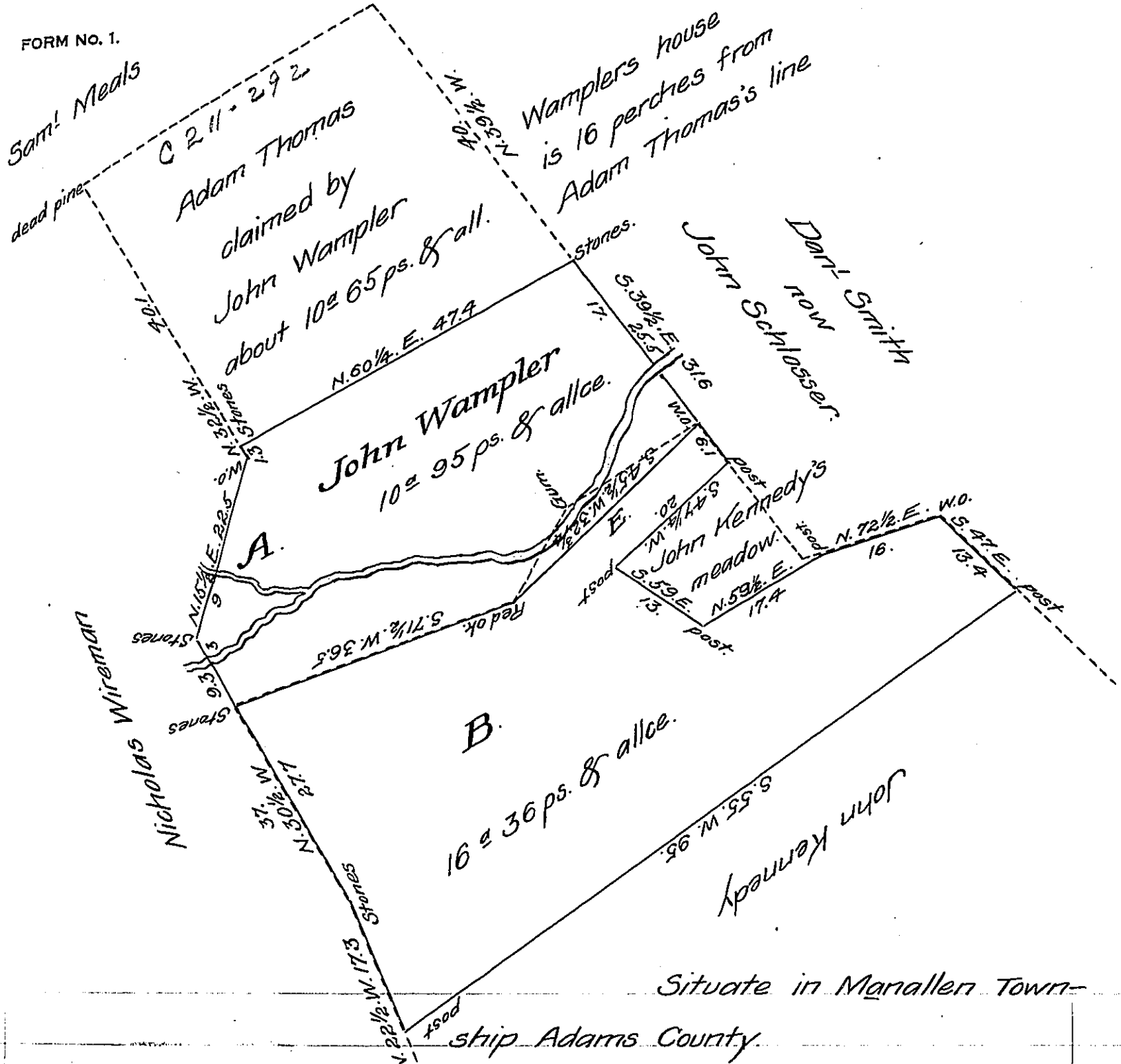


FORM NO. 1.



Situate in Manallen Town-
ship Adams County.

A. Surveyed October 26th 1813. In pur-
suance of a warrant granted to
John Wampler for 100^a dated Sept 27th 1813.

B. Surveyed October 17th 1814 on the same warrant in pur-
suance of instructions from the Surveyor General dated Jan^y 21st
1814, which is claimed by John Kennedy the dotted lines S.E. of the
Creek represent that part of Kennedys draft the line E. goes within
Kennedys draft but was run with his consent in 1813.

Sam^l Sloan D.S.

To Rich^d T. Leech Esq^r
Surveyor General

IN TESTIMONY that the above is a copy of the original remaining on file in
the Department of Internal Affairs of Pennsylvania, made
comformably to an Act of Assembly approved the 16th day of
February 1833, I have hereunto set my hand and caused
the Seal of said Department to be affixed at Harrisburg,
this fifth day of June 1907.

Henry Hoveck
Secretary of Internal Affairs.